

ROKAE

Industrial Robot Series

XB4 Series



More intelligent, more efficient

Product Advantages

High Precision & High Speed, Efficient Production

- Satisfactory quality and takt time for customers thanks to the amazing stability and best-in-class motion control

Efficient Protection, Worry-Free Operation

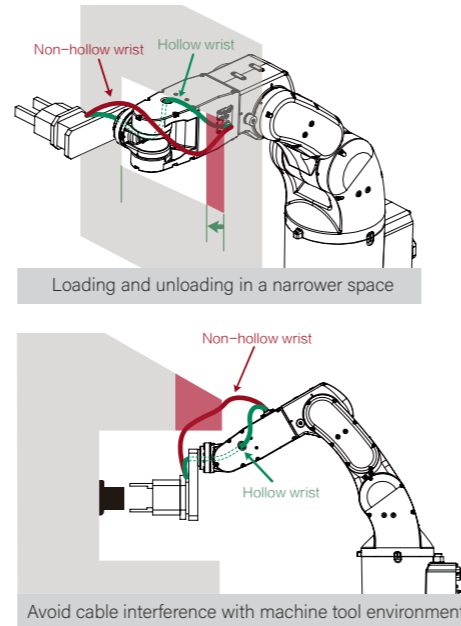
- Overall IP67 protection rating provides adequate protection against extreme conditions

Compact Design, Easy to Deploy

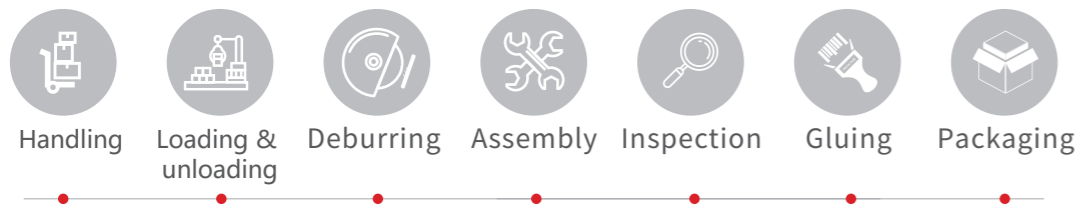
- Easy deployment is made possible by the internal cables and compact design

Outstanding Agility in Limited Space

- Optional hollow wrists made it easier to integrate into small automation units to accomplish various tasks efficiently



Applications



XB4

- **Payload: 4kg**
- **Reach: 596mm**



XB4h

- **Payload: 4kg**
- **Reach: 596mm**

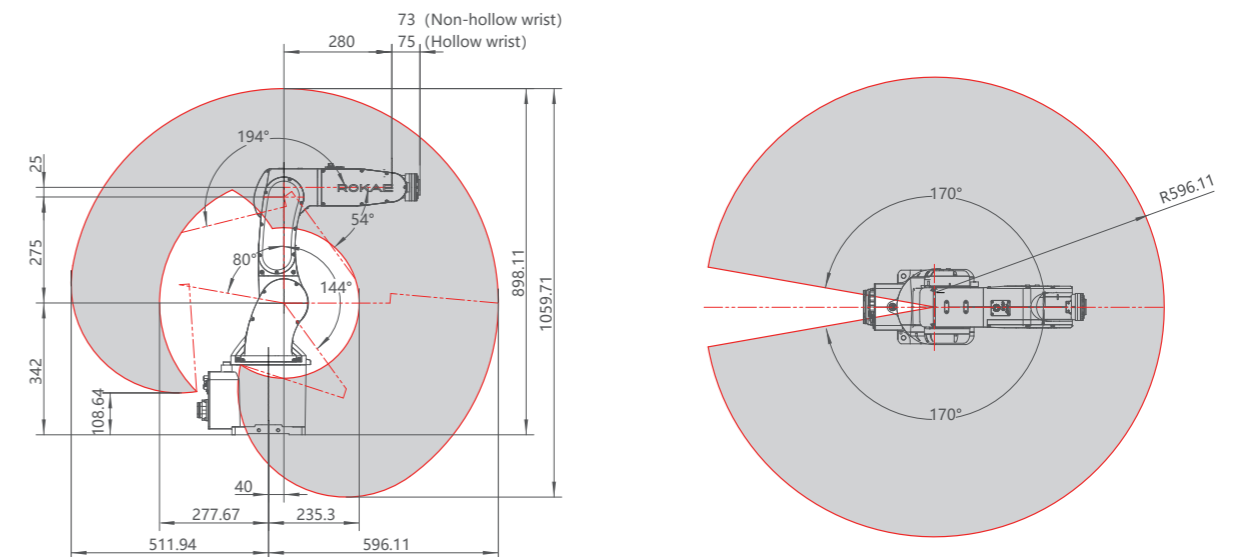


Specifications

Body Specifications

Model	XB4	XB4h
DOF	6	
Reach	596 mm	
Repeatability	±0.02 mm	
Payload	4kg	
Range of motion	Axis 1	-170° to +170°
	Axis 2	-80° to +144°
	Axis 3	-194° to +54°
	Axis 4	-170° to +170°
	Axis 5	-119° to +119°
	Axis 6	-360° to +360°
Maximum speed	Axis 1	440°/s
	Axis 2	355°/s
	Axis 3	440°/s
	Axis 4	490°/s
	Axis 5	450°/s
	Axis 6	720°/s
Operating temperature	0°C to +40°C	
Storage temperature	-10°C to +55°C	
IP rating	IP67	
Mounting method	Floor, Ceiling	
Noise level	≤70dB(A)	≤75dB(A)
Weight	About 32kg	
AIR	4-Φ4, 5bar	
Signal	8 channels (30V, 0.5A)	

Working range



ROKAE



ROKAE Robotics

400-010-8700
www.rokae.com
sales@rokae.com